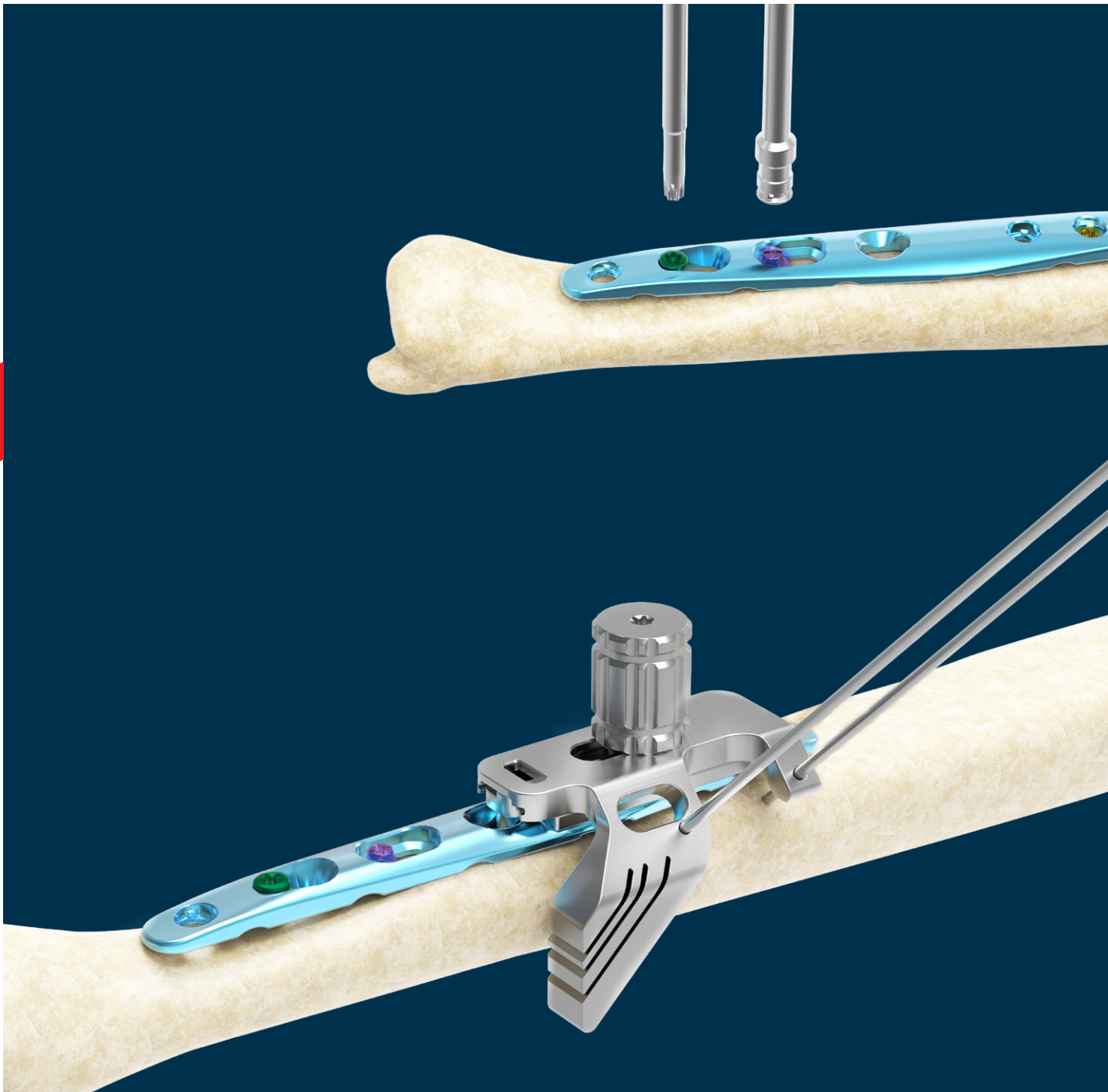


CE
0120



ARIX WRIST SYSTEM

ARIX Ulna Osteotomy System



Contents

2	Indications
3	Product Overview
4	Features and Benefits
12	Ordering Information – Plates
15	Ordering Information – Screws
18	Ordering Information – Instruments
21	Set Configuration Suggestion

ARIX Ulna Osteotomy System

is intended for fractures and osteotomies, in particular for the ulna.



Plate Specifications

Plates Types	Widths	Thickness	Length	Holes	Color	Material
Small	9.5mm	3.0mm	69, 77.5, 80.5mm	6 holes and 7 holes	Blue	Pure Titanium Gr.4
Large	11mm					

Screw Specifications

Screw Types	Outer Diameter	Length	Insertion Types	Screw Head Recess	Color	Material
Locking Screws	2.8mm	12 ~ 20mm	Self-Tapping	Torx	Gold	Titanium Alloy
Cortical Screws	2.8mm	12 ~ 20mm		Torx	Green	
Peg Screws	2.8mm	12 ~ 20mm		External Hex	Purple	

Screw Head Recess

Self-retaining Recess for connection between Screw Head and Screwdriver Shaft

Screw Options

Locking Screw: Length 12 ~ 20mm

Cortical Screw: Length 12 ~ 20mm

Peg Screw: Length 12 ~ 20mm

Outer Diameter : 2.8mm

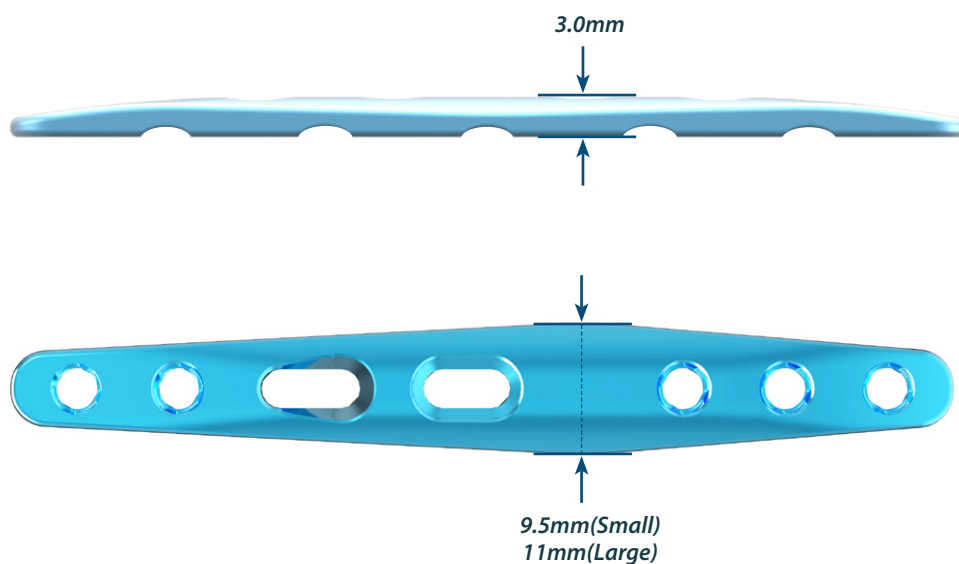


Anatomical Ulnar Osteotomy Plate

Anatomical width variance considering distal, middle, and proximal parts of ulna.

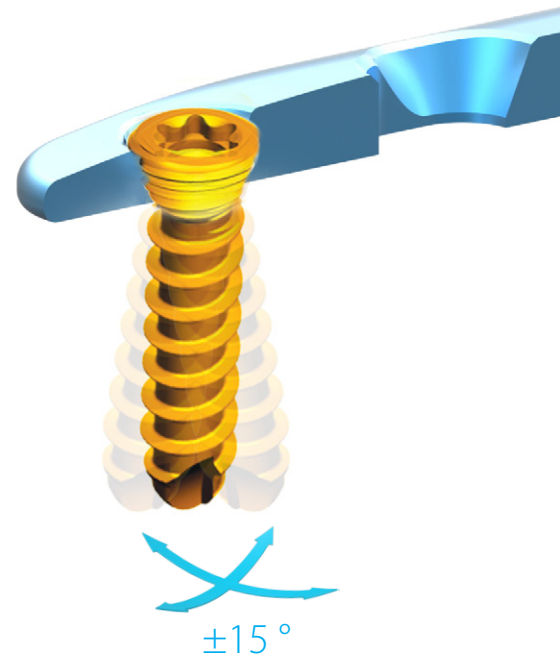
Minimal Soft Tissue Irritation

Anatomic arch design for less irritation Low overall profile of the plate and screw construct for minimal soft tissue irritation.



Poly-Axial Locking System

The poly-axial hole of a plate accepts locking or cortical screws as surgical needs. Locking screws as well as cortical screws can be inserted in $\pm 15^\circ$ the plate in any direction.



Benefits of Locking Plating System

Locking plate and screw system provides more stable fixation than conventional plate and screw system. Locking screws will not loosen from the plate during the healing process.

Locking screws do not rely on bone to plate compression.

A fixed angle construct can be created by using locking screws in osteopenic bone or multifragmentary fractures where secure bone purchase with conventional screws may be compromised.

Compression Oblong Holes

Solid Compression by Ulna Reduction Forceps
Additional Compression using Compression Holes



Intraoperative Simplicity in Choosing Screws

2.8mm locking and cortical screws can be used in any holes of a plate for intraoperative simplicity.

Easy Plate Identification

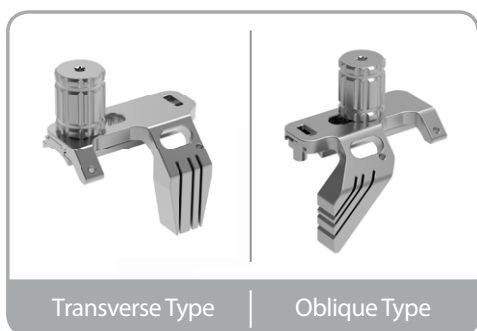
Plate size information is marked on plate such as Small or Large.



Easy Sawing Guide

The Easy Sawing Guide offers the ability to make adjustments needed to perform the first and second cuts without the need for numerous guides.

Additionally, allowing continuous adjustment from 1 mm to 10 mm, the osteotomy guide allows resection of the desired amount.

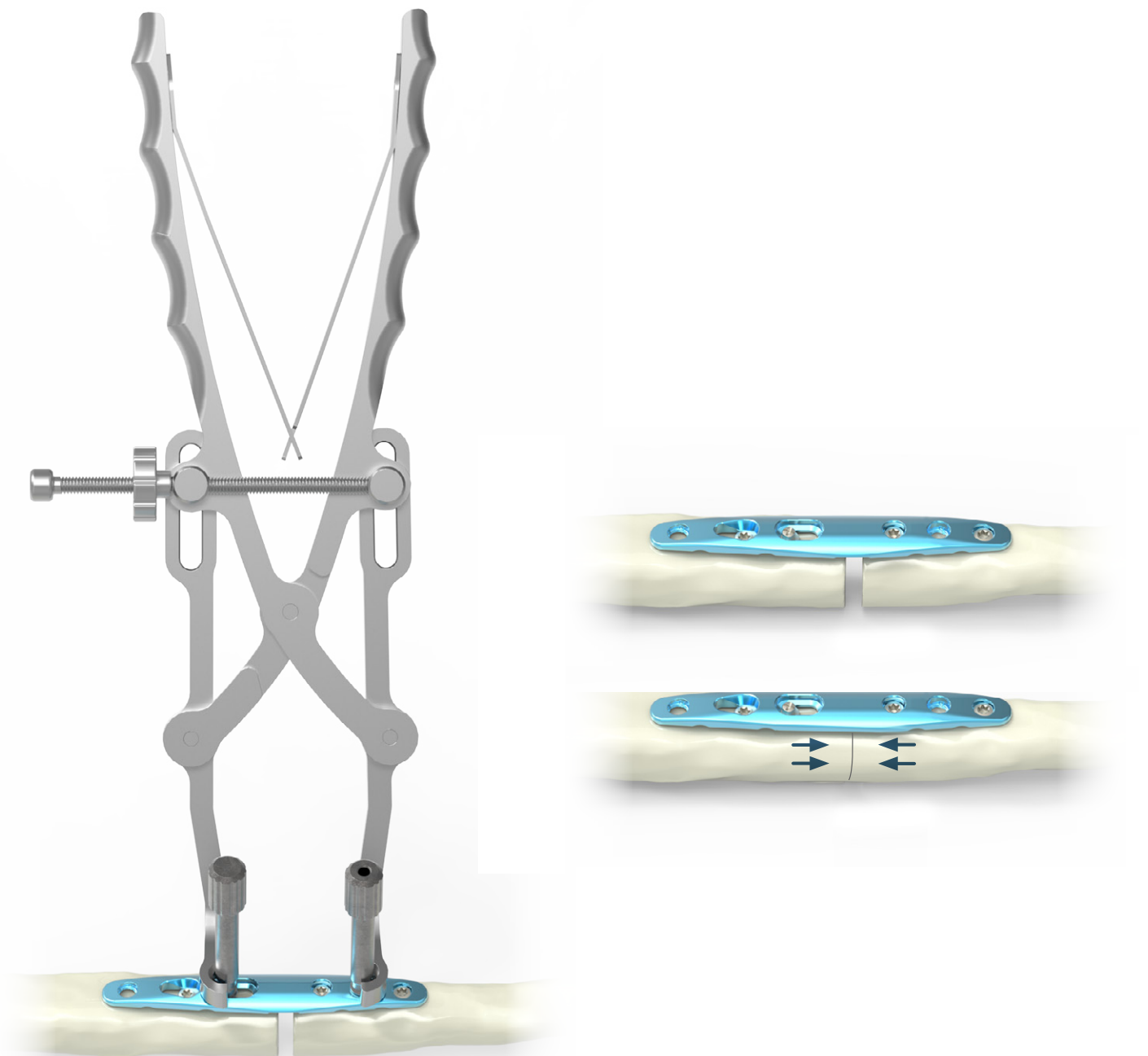


Dual-Purpose Peg Screw
(Fixation & Compression)

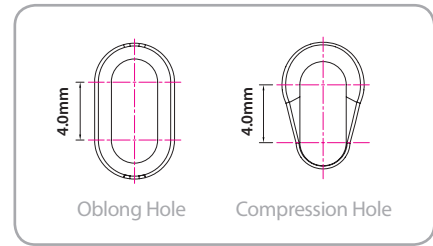


Advanced Instrumentation

The Reduction Clamp utilizes a speed-lock wheel designed to maintain a hands-free compression of the osteotomy. The multipurpose temporary Reduction Peg is partially threaded to help ensure that the far cortex is not tapped prior to it being replaced by a screw. The Reduction Peg is designed to stabilize the ulna and help maintain rotational alignment while creating the osteotomy prior to being used with the Reduction Clamp.



ARIX Ulna Osteotomy Plates



25V-DLUL-006-H2

- Ulna Osteotomy Locking Plate / Small
- Length: 69mm
- Holes : 6 Holes, 2 Oblong holes,
- Thickness: 3.0mm
- Type: Transverse
- Color: Blue



25V-DLUL-106-H2

- Ulna Osteotomy Locking Plate / Large
- Length: 69mm
- Holes : 6 Holes, 2 Oblong holes
- Thickness: 3.0mm
- Type: Transverse
- Color: Blue



25V-DLUL-007-H2

- Ulna Osteotomy Locking Plate / Small
- Length: 77.5mm
- Holes : 7 Holes, 2 Oblong holes
- Thickness: 3.0mm
- Type: Transverse
- Color: Blue



25V-DLUL-107-H2

- Ulna Osteotomy Locking Plate / Large
- Length: 77.5mm
- Holes : 7 Holes, 2 Oblong holes
- Thickness: 3.0mm
- Type: Transverse
- Color: Blue



25V-DLUL-007-H3

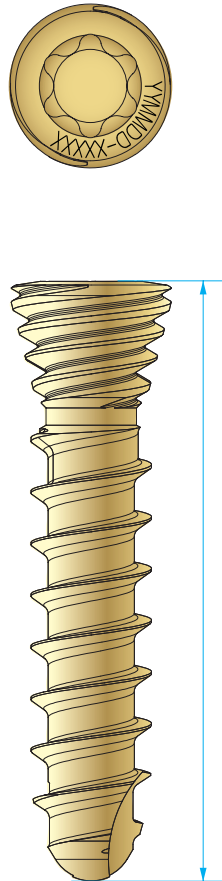
- Ulna Osteotomy Locking Plate / Small
- Length: 80.5mm
- Holes : 7 Holes, 2 Oblong holes,
- Thickness: 3.0mm
- Type: Oblique
- Color: Blue



25V-DLUL-107-H3

- Ulna Osteotomy Locking Plate / Large
- Length: 80.5mm
- Holes : 7 Holes, 2 Oblong holes,
- Thickness: 3.0mm
- Type: Oblique
- Color: Blue

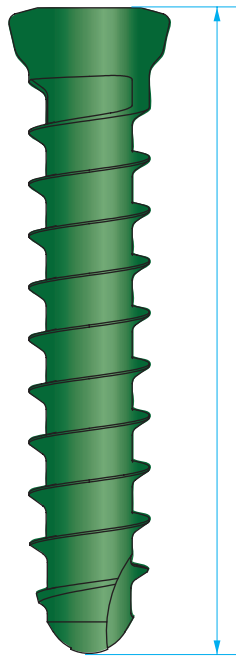
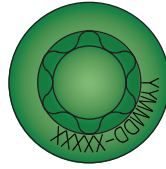
ARIX Ulna Osteotomy Screw



2.8mm Self-Tapping Locking Screws

[Unit: mm]

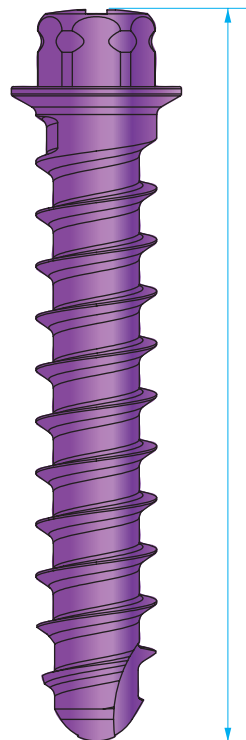
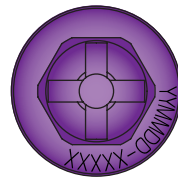
No.	Code	Head Diameter	Outer Diameter	Pick-up Shape	Length (L)	Anodizing Color
1	28L-SO-S12-TA	Ø3.8	Ø2.8	Torx	12	Gold
2	28L-SO-S14-TA				14	
3	28L-SO-S16-TA				16	
4	28L-SO-S18-TA				18	
5	28L-SO-S20-TA				20	



2.8mm Self-Tapping Cortical Screws

[Unit: mm]

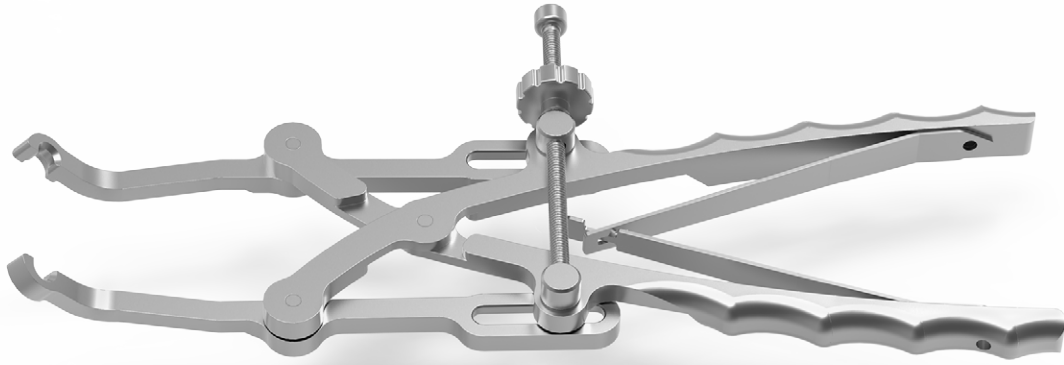
No.	Code	Head Diameter	Outer Diameter	Pick-up Shape	Length (L)	Anodizing Color
1	28-SO-S12-TA	Ø3.7	Ø2.8	Torx	12	Green
2	28-SO-S14-TA				14	
3	28-SO-S16-TA				16	
4	28-SO-S18-TA				18	
5	28-SO-S20-TA				20	



2.8mm Self-Tapping Peg Screws

[Unit: mm]

No.	Code	Head Diameter	Outer Diameter	Pick-up Shape	Length (L)	Anodizing Color
1	28C-HF-S12A	Ø2.7	Ø2.8	External Hex	12	Purple
2	28C-HF-S14A				14	
3	28C-HF-S16A				16	
4	28C-HF-S18A				18	
5	28C-HF-S20A				20	



111-105
Ulna Reduction forceps



111-109
Drill Sleeve for Ulna Compression



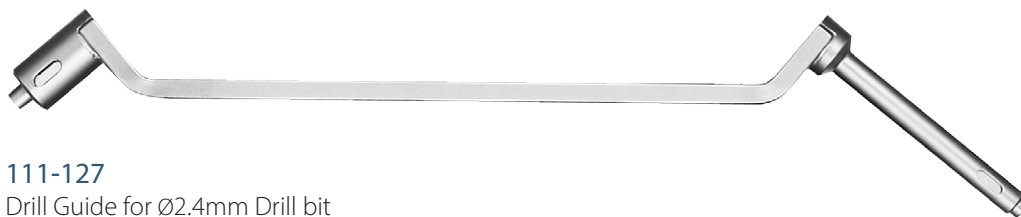
111-128
Drill Sleeve for Ø2.4mm Drill bit



113-HF-612
Driver for Peg Screw



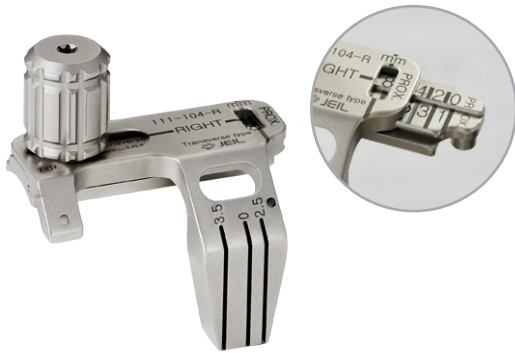
113-HF-613
Driver for STARIX T8



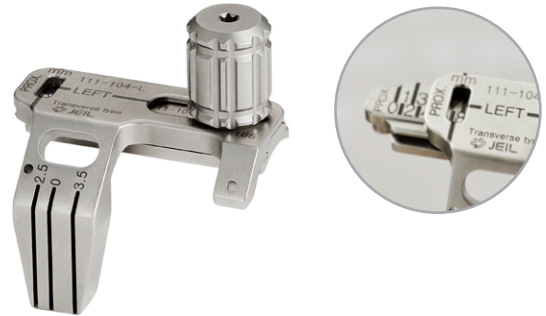
111-127
Drill Guide for Ø2.4mm Drill bit



111-075
Depth Gauge for 2.5mm screws



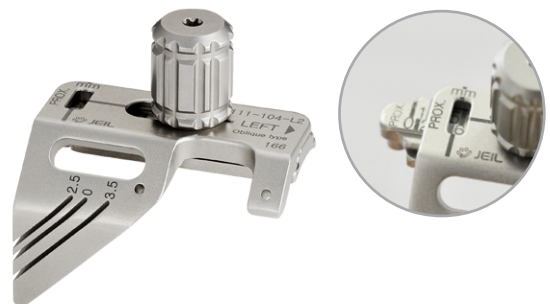
111-104-R
Sawing guide (Transverse type, Right)



111-104-L
Sawing guide (Transverse type, Left)



111-104-R2
Sawing guide (Oblique type, Right)



111-104-L2
Sawing guide (Oblique type, Left)

* This saw guide works with saw blades which thickness is less than 0.4mm.



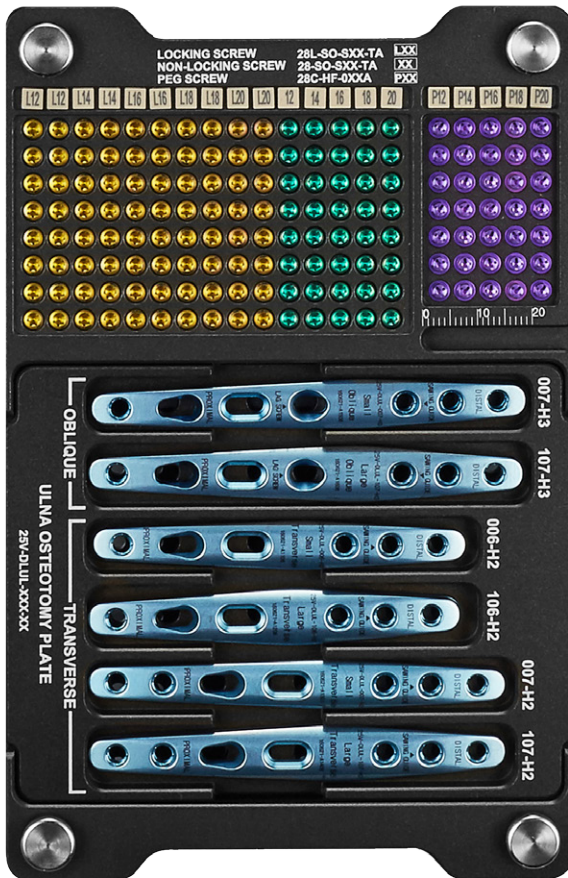
112-28-601
2.8mm Cortical Bone Screw Drill, Ø2.4mm



112-28-601-L
2.8mm Cortical Bone Screw Lag Drill, Ø2.9mm



111-092
Screwdriver Handle



112-101-3
Plate Tray



2.8 Ulna Osteotomy Set Configuration

NO	Model	Set Quantity	NO	Model	Set Quantity
1	112-101 Ulna Osteotomy System Full Container	1	20	28C-HF-S14A Peg Screw 2.8x14mm	7
2	112-101-3 Ulna Osteotomy Implant Module	1	21	28C-HF-S16A Peg Screw 2.8x16mm	7
3	25V-DLUL-006-H2 Ulna Osteotomy Plate, Small, 6 holes(2 Oblong), Transverse	2	22	28C-HF-S18A Peg Screw 2.8x18mm	7
4	25V-DLUL-106-H2 Ulna Osteotomy Plate, Large, 6 holes(2 Oblong), Transverse	2	23	28C-HF-S20A Peg Screw 2.8x20mm	7
5	25V-DLUL-007-H2 Ulna Osteotomy Plate, Small, 7 holes(2 Oblong), Transverse	2	24	111-092 Screwdriver Handle	2
6	25V-DLUL-107-H2 Ulna Osteotomy Plate, Large, 7 holes(2 Oblong), Transverse	2	25	111-075 Depth Gauge for 2.5mm screws	1
7	25V-DLUL-007-H3 Ulna Osteotomy Plate, Small, 7 holes(2 Oblong), Oblique	2	26	112-28-601 2.8mm Cortical Bone Screw Drill, Ø2.4mm	2
8	25V-DLUL-107-H3 Ulna Osteotomy Plate, Large, 7 holes(2 Oblong), Oblique	2	27	112-28-601-L 2.8mm Cortical Bone Screw Lag Drill, Ø2.9mm	1
9	28L-SO-S12-TA Locking Screw 2.8x12mm	16	28	111-127 Drill Guide for Ø2.4mm Drill bit	1
10	28L-SO-S14-TA Locking Screw 2.8x14mm	16	29	111-128 Drill Sleeve for Ø2.4mm Drill bit	1
11	28L-SO-S16-TA Locking Screw 2.8x16mm	16	30	111-109 Drill Sleeve for Ulna Compression	1
12	28L-SO-S18-TA Locking Screw 2.8x18mm	16	31	113-HF-612 Driver for Peg Screw	1
13	28L-SO-S20-TA Locking Screw 2.8x20mm	16	32	113-HF-613 Driver for STARIX T8	2
14	28-SO-S12-TA Cortical Screw 2.8x12mm	8	33	111-104-R Sawing Guide (Transverse, Right)	1
15	28-SO-S14-TA Cortical Screw 2.8x14mm	8	34	111-104-L Sawing Guide (Transverse, Left)	1
16	28-SO-S16-TA Cortical Screw 2.8x16mm	8	35	111-104-R2 Sawing Guide (Oblique, Right)	1
17	28-SO-S18-TA Cortical Screw 2.8x18mm	8	36	111-104-L2 Sawing Guide (Oblique, Left)	1
18	28-SO-S20-TA Cortical Screw 2.8x20mm	8	37	111-105 Reduction Forceps for Ulna Compression	1
19	28C-HF-S12A Peg Screw 2.8x12mm	7			

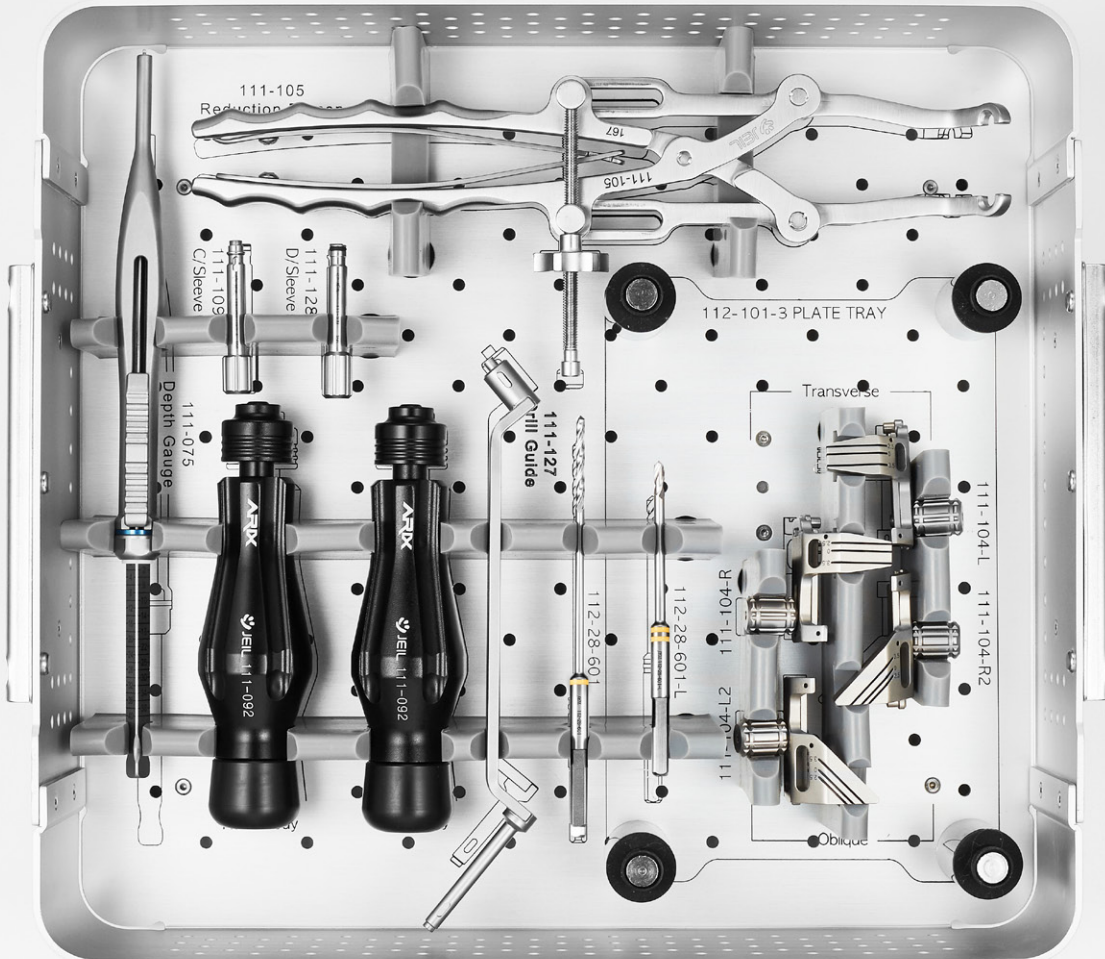
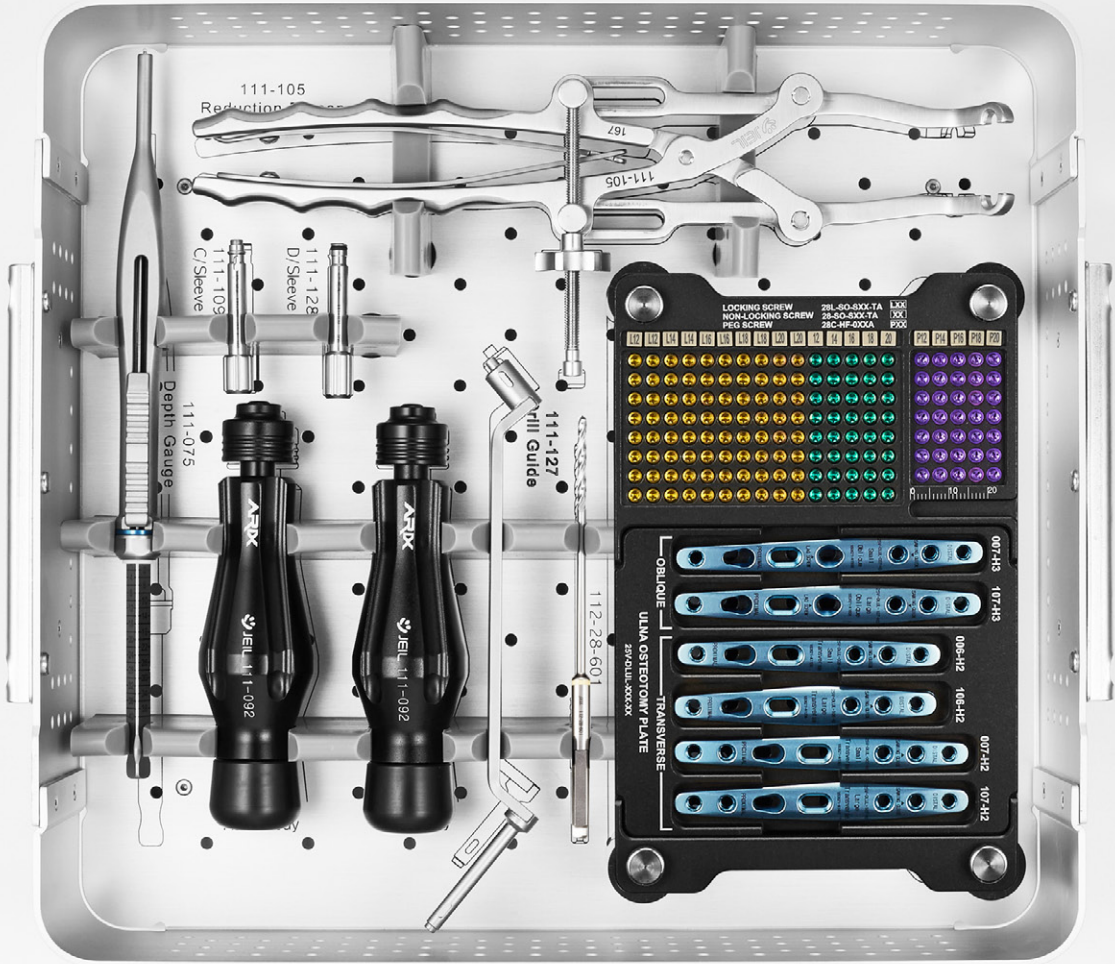
ARX WRIST SYSTEM

ARIX Ulna Osteotomy System



112-101

Ulna Osteotomy System Full Container





JEIL MEDICAL CORPORATION

702•703•704•705•706•804•805•807•812-ho, 55, Digital-ro 34-gil, Guro-gu, Seoul, 08378, Rep. of Korea

DOMESTIC SALES_ **T** 82.2.850.3500 **F** 82.2.850.3535 **E** jeil@jeilmed.co.kr

INTERNATIONAL SALES_ **T** 82.2.850.3898 **F** 82.2.850.3537 **E** global@jeilmed.co.kr